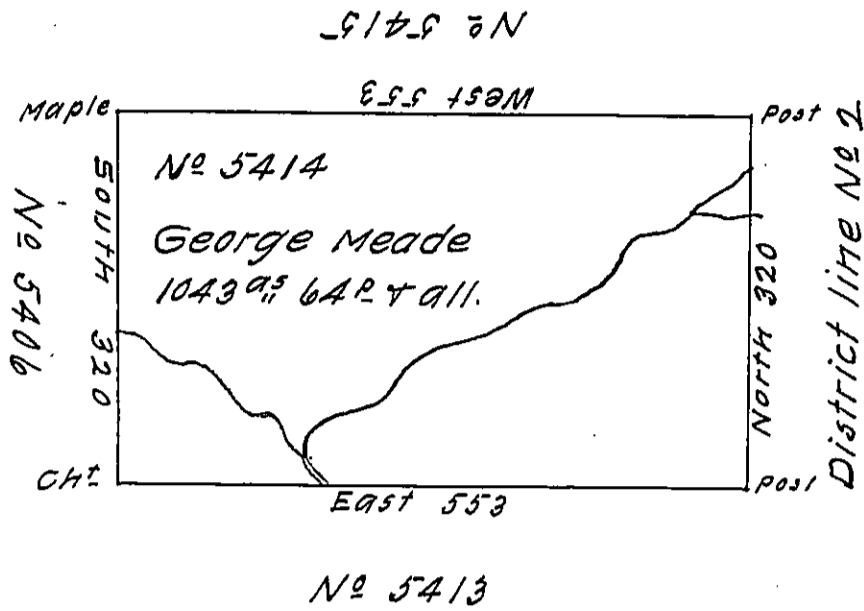


a 50-66 1/2

a 51-6



M-271

Situate on the waters of the west branch of Susquehanna in North<sup>d</sup> County containing 1043 acres 64 perches & the usual allowance for roads. Surveyed April 30<sup>th</sup> 1794 for George Meade in pursuance of a warrant No 5414 dated 3<sup>d</sup> March 1794.

John Canam D.S.

Daniel Brodhead Esq<sup>r</sup> S.G.

IN TESTIMONY that the above is a copy of the original remaining on file in the Department of Internal Affairs of Pennsylvania, made conformably to an Act of Assembly approved the 16th day of February, 1833, I have hereunto set my Hand and caused the Seal of said Department to be affixed at Harrisburg, this twenty sixth day of January 1912

*Henry Howard*  
Secretary of Internal Affairs.